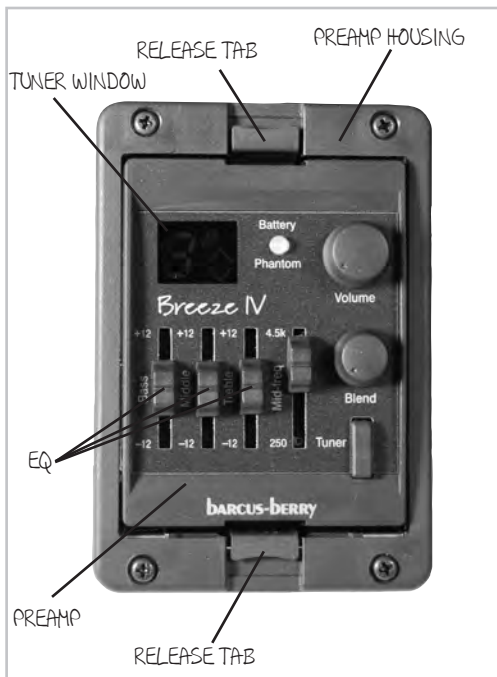


THE BARCUS BERRY® BREEZE IV ACOUSTIC PREAMP IS A PROFESSIONAL QUALITY ACOUSTIC GUITAR PREAMP THAT FEATURES A THREE BAND EQ AND DUAL INPUT CAPABILITY. BESIDES THE POPULAR PIEZO UNDER-SADDLE PICKUP, YOU CAN ADD A CONDENSER MIC (LIKE OUR BBGM), A MAGNETIC SOUND HOLE PICKUP, OR AN ADDITIONAL SOUND BOARD PICKUP (LIKE OUR BBPCP) AND EASILY CONTROL THE BLEND OF THE SIGNALS. IN ADDITION, YOU CAN ADJUST THE CENTER FREQUENCY OF THE MIDRANGE EQ CONTROL TO GET YOUR SOUND JUST RIGHT.

WITH AN EASY-TO-ACCESS BATTERY COMPARTMENT INSIDE THE PREAMP, AND A LOW-BATTERY LED ON THE FRONT PANEL, YOUR PREAMP WILL ALWAYS BE READY WHEN YOU ARE. MOREOVER, THE BREEZE IV PROVIDES BOTH A BALANCED XLR OUTPUT AND A 1/4" PHONE OUTPUT TO ADAPT TO ANY PLAYING SITUATION. PLUGGING IN A GUITAR CABLE OR A GROUNDED-SHELL MIC CABLE WILL TURN ON THE PREAMP FOR USE. USING THE XLR OUTPUT, THE BREEZE IV CAN BE POWERED BY YOUR AMP'S OR MIXER'S PHANTOM POWER SOURCE TO HELP MAKE YOUR BATTERIES LAST AND LAST.

CHECK OUT THE REST OF THIS GUIDE TO GET THE BEST PERFORMANCE FROM YOUR PREAMP.



VOLUME

ADJUSTS THE OVERALL OUTPUT LEVEL OF THE PREAMP.

BASS EQ

ADDS OR SUBTRACTS THE LOW FREQUENCY POWER OF THE GUITAR SIGNAL BY UP TO 12DB.

MID EQ

CONTROLS THE AMOUNT OF A RANGE OF FREQUENCIES IN THE MIDDLE OF THE SOUND SPECTRUM OF THE GUITAR BY UP TO 12DB

TREBLE EQ

ADDS OR SUBTRACTS THE HIGH FREQUENCY POWER OF THE GUITAR SIGNAL BY UP TO 12DB.

MID FREQ

SETS THE FREQUENCY OF THE MID CONTROL BETWEEN 250 HZ TO 4.5KHZ.

BLEND

ADJUSTS THE LEVEL OF THE AUX-IN SIGNAL THAT IS MIXED WITH THE SADDLE PICKUP (SEE NEXT PAGE FOR CONNECTIONS).

TUNER

THIS SWITCH TURNS ON THE BUILT-IN TUNER AND MUTES THE PREAMP OUTPUT WHEN TUNING. AFTER ABOUT TWO MINUTES, AN AUTO-OFF FEATURE TURNS OFF THE TUNER TO CONSERVE BATTERY POWER. PLEASE NOTE THAT THE TUNER WILL WORK WITHOUT PLUGGING IN A CABLE.

WHILE THE TUNER IS ON, PRESSING THE BUTTON A SECOND TIME WHILE PLAYING A REFERENCE NOTE WILL OFFSET THE CALIBRATION TO THAT PITCH. (HANDY WHEN TUNING TO AN OUT-OF-TUNE INSTRUMENT).

IF YOU FINISH TUNING PRIOR TO THE TWO MINUTE AUTO-OFF TIMER, YOU SIMPLY PRESS AND HOLD THE TUNER BUTTON UNTIL THE FLASHING LEDs IN THE WINDOW ARE EXTINGUISHED. THE OUTPUT WILL ALSO UN-MUTE.

TUNER WINDOW

THESE LEDs INDICATE THE NOTE BEING PLAYED AND WHETHER IT IS SHARP OR FLAT. IF THE ARROW POINTS UPWARD, RAISE THE PITCH OR TUNE DOWN IF THE ARROW POINTS DOWNWARDS UNTIL BOTH ARROWS ILLUMINATE TO FORM A DIAMOND.

BATTERY LED

WHEN REPEATEDLY FLASHING RED, INDICATES THAT THE BATTERY IS LOW AND SHOULD BE CHANGED SOON. IT WILL ALSO INTERMITTENTLY FLASH WHEN A CABLE IS INSERTED TO CONFIRM NORMAL OPERATION.

PHANTOM LED

ILLUMINATES GREEN WHEN THE PREAMP IS PROVIDED WITH PHANTOM POWER FROM THE MIXER OR AMPLIFIER.

RELEASE TABS

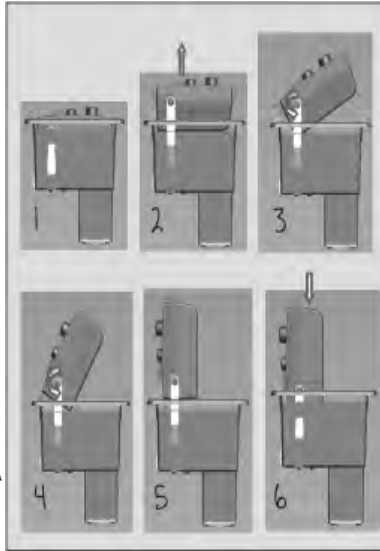
PINCHING THESE WILL RELEASE THE MODULE FROM ITS RECEPTACLE. USE TO ACCESS TO THE BATTERY COMPARTMENT. SEE THE ILLUSTRATION ON THE LAST PAGE FOR GUIDANCE ON REPLACING THE BATTERY.

MODULE HOUSING

THE PREAMP IS HOUSED WITHIN THIS ENCLOSURE. THE PREAMP IS UNLATCHED, RAISED, AND ROTATED TO GAIN ACCESS TO THE BATTERY COMPARTMENT. SEE THE ILLUSTRATION ON THE LAST PAGE FOR GUIDANCE ON REPLACING THE BATTERY.

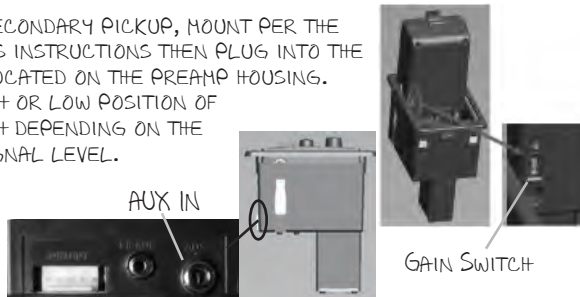
TO REPLACE YOUR BATTERY, FOLLOW THE PICTORIAL SEQUENCE BELOW:

1. GRASP THE RELEASE TABS AND PINCH TO RELEASE THE PREAMP FROM HOUSING.
2. RAISE THE PREAMP FULLY FROM THE HOUSING.
3. ROTATE THE PREAMP WHILE MAINTAINING FULL EXTENSION.
4. CONTINUE TO ROTATE UNTIL THE PREAMP REACHES VERTICAL ORIENTATION.
5. PUSH THE PREAMP STRAIGHT DOWN TO LOCK FOR EASY BATTERY ACCESS.
6. THE BATTERY COMPARTMENT CAN NOW BE ACCESSED FOR REMOVAL OR INSERTION.



AFTER BATTERY REPLACEMENT, REVERSE THE SEQUENCE TO RESET.

TO INSTALL A SECONDARY PICKUP, MOUNT PER THE MANUFACTURER'S INSTRUCTIONS THEN PLUG INTO THE AUX IN JACK LOCATED ON THE PREAMP HOUSING. SELECT THE HIGH OR LOW POSITION OF THE GAIN SWITCH DEPENDING ON THE TRANSDUCER SIGNAL LEVEL.



BARCUS-BERRY®

OPERATION MANUAL

Breeze IV

MULTI-SENSOR ACOUSTIC GUITAR PREAMP

LIMITED WARRANTY

THIS BARCUS-BERRY PRODUCT IS WARRANTED FOR A PERIOD OF ONE (1) YEAR FROM THE DATE OF PURCHASE AGAINST DEFECTS IN WORKMANSHIP AND PARTS. FOR COMPLETE WARRANTY DETAILS OR MORE INFORMATION ON OTHER BARCUS-BERRY® PRODUCTS, VISIT WWW.BARCUSBERRY.COM.

BARCUS-BERRY®
PO BOX 63366, N CHARLESTON, SC 29419 USA
WWW.BARCUSBERRY.COM