

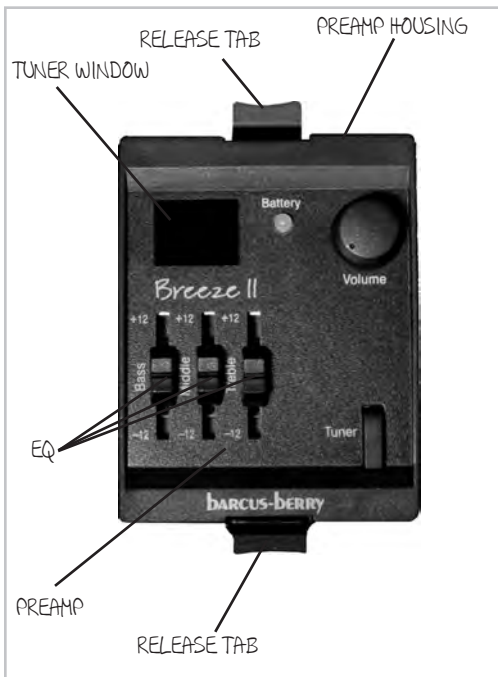
THE BARCUS BERRY® BREEZE II ACOUSTIC PRE-AMP

IS A PROFESSIONAL QUALITY ACOUSTIC GUITAR PREAMP THAT FEATURES CONVENIENT VOLUME CONTROL, A FLEXIBLE THREE BAND EQ, AS WELL AS A SOPHISTICATED AND ACCURATE BUILT-IN TUNER.

WITH AN EASY-TO-ACCESS BATTERY COMPARTMENT INSIDE THE PREAMP AND A LOW-BATTERY LED ON THE FRONT PANEL, YOUR PREAMP WILL ALWAYS BE READY WHEN YOU ARE. MOREOVER, THE BREEZE II PROVIDES A 1/4" PHONE OUTPUT TO ADAPT TO MOST PLAYING SITUATIONS. SIMPLY PLUG IN A GUITAR CABLE TO TURN ON THE PREAMP.

BEFORE USE, PLEASE MAKE SURE THAT YOU HAVE INSTALLED A GOOD QUALITY ALKALINE BATTERY TO ASSURE THE LONGEST AND MOST RELIABLE PERFORMANCE.

CHECK OUT THE REST OF THIS GUIDE TO GET THE DETAILS ABOUT THE FUNCTIONS AND OPERATION OF YOUR PREAMP.



VOLUME

ADJUSTS THE OVERALL OUTPUT LEVEL OF THE PREAMP.

BASS EQ

ADDS OR SUBTRACTS THE LOW FREQUENCY POWER OF THE GUITAR SIGNAL BY UP TO 12DB.

MID EQ

CONTROLS THE AMOUNT OF A RANGE OF FREQUENCIES IN THE MIDDLE OF THE SOUND SPECTRUM OF THE GUITAR BY UP TO 12DB

TREBLE EQ

ADDS OR SUBTRACTS THE HIGH FREQUENCY POWER OF THE GUITAR SIGNAL BY UP TO 12DB.

TUNER

THIS SWITCH TURNS ON THE BUILT-IN TUNER AND MUTES THE PREAMP OUTPUT WHEN TUNING. AFTER ABOUT TWO MINUTES, AN AUTO-OFF FEATURE TURNS OFF THE TUNER TO CONSERVE BATTERY POWER. PLEASE NOTE THAT THE TUNER WILL WORK WITHOUT PLUGGING IN A CABLE.

WHILE THE TUNER IS ON, PRESSING THE BUTTON A SECOND TIME WHILE PLAYING A REFERENCE NOTE WILL OFFSET THE CALIBRATION TO THAT PITCH. (HANDY WHEN TUNING TO AN OUT-OF-TUNE INSTRUMENT).

IF YOU FINISH TUNING PRIOR TO THE TWO MINUTE AUTO-OFF TIMER, YOU SIMPLY PRESS AND HOLD THE TUNER BUTTON UNTIL THE FLASHING LEDES IN THE WINDOW ARE EXTINGUISHED. THE OUTPUT WILL ALSO UN-MUTE.

TUNER WINDOW

THESE LEDES INDICATE THE NOTE BEING PLAYED AND WHETHER IT IS SHARP OR FLAT. IF THE ARROW POINTS UPWARD, RAISE THE PITCH OR TUNE DOWN IF THE ARROW POINTS DOWNWARDS UNTIL BOTH ARROWS ILLUMINATE TO FORM A DIAMOND.

BATTERY LED

WHEN REPEATEDLY FLASHING RED, INDICATES THAT THE BATTERY IS LOW AND SHOULD BE CHANGED SOON. IT WILL ALSO INTERMITTENTLY FLASH WHEN A CABLE IS INSERTED TO CONFIRM NORMAL OPERATION.

RELEASE TABS

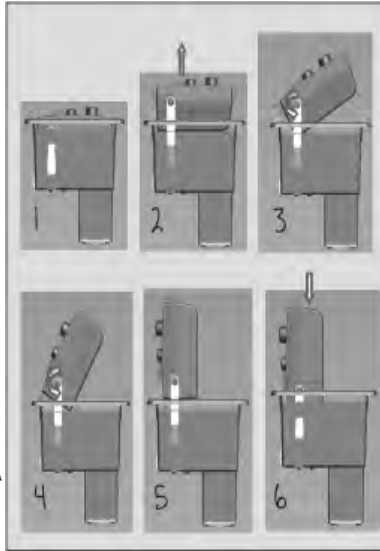
PINCHING THESE WILL RELEASE THE MODULE FROM ITS RECEPTACLE. USE TO ACCESS TO THE BATTERY COMPARTMENT. SEE THE ILLUSTRATION ON THE LAST PAGE FOR GUIDANCE ON REPLACING THE BATTERY.

MODULE HOUSING

THE PREAMP IS HOUSED WITHIN THIS ENCLOSURE. THE PREAMP IS UNLATCHED, RAISED, AND ROTATED TO GAIN ACCESS TO THE BATTERY COMPARTMENT. SEE THE ILLUSTRATION ON THE LAST PAGE FOR GUIDANCE ON REPLACING THE BATTERY.

TO REPLACE YOUR BATTERY, FOLLOW THE PICTORIAL SEQUENCE BELOW:

1. GRASP THE RELEASE TABS AND PINCH TO RELEASE THE PREAMP FROM HOUSING.
2. RAISE THE PREAMP FULLY FROM THE HOUSING.
3. ROTATE THE PREAMP WHILE MAINTAINING FULL EXTENSION.
4. CONTINUE TO ROTATE UNTIL THE PREAMP REACHES VERTICAL ORIENTATION.
5. PUSH THE PREAMP STRAIGHT DOWN TO LOCK FOR EASY BATTERY ACCESS.
6. THE BATTERY COMPARTMENT CAN NOW BE ACCESSED FOR REMOVAL OR INSERTION.



AFTER BATTERY REPLACEMENT, REVERSE THE SEQUENCE TO RESET.

BARCUS-BERRY®

OPERATION MANUAL

Breeze II

ACOUSTIC GUITAR PREAMP

LIMITED WARRANTY

THIS BARCUS-BERRY PRODUCT IS WARRANTED FOR A PERIOD OF ONE (1) YEAR FROM THE DATE OF PURCHASE AGAINST DEFECTS IN WORKMANSHIP AND PARTS. FOR COMPLETE WARRANTY DETAILS OR MORE INFORMATION ON OTHER BARCUS-BERRY® PRODUCTS, VISIT WWW.BARCUSBERRY.COM.

BARCUS-BERRY®
PO BOX 63366, N CHARLESTON, SC 29419 USA
WWW.BARCUSBERRY.COM